



ALLIED

THE CUTTING EDGE



PCD Endmills for composites 2021

C6 PCD Endmill

Composite & aluminium machining

Application

All composite & aluminium materials.

Machine

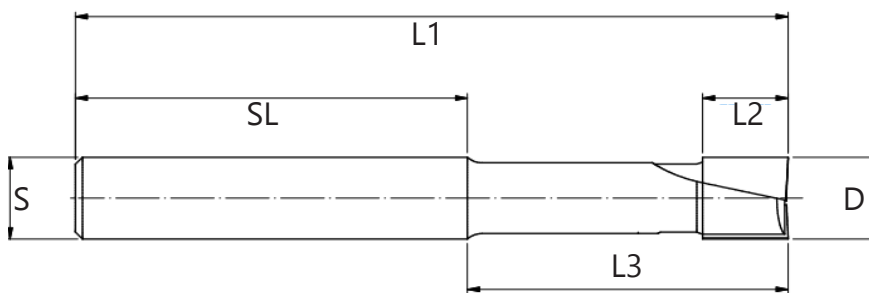
Mechanical.

Design

2 cutting flutes with straight shear. Solid carbide body to reduce vibration. Reduced neck diameter to offer deeper machining.

Radius

Endmills are stocked with a square end, we can apply any radius required to each tool.



| D mm | L2 mm | L3 mm | SL mm | S mm | L1 mm | Z | Pt.No. |
|---------|----------|----------|----------|---------|----------|---|---------------|
| 3 | 6 | 20 | 40 | 3 | 60 | 1 | 90203-9-129-R |
| 4 | 6 | 20 | 40 | 4 | 60 | 2 | 90203-9-130-R |
| 6 | 10 | 30 | 50 | 6 | 80 | 2 | 90203-9-120-R |
| 8 | 10 | 30 | 70 | 8 | 100 | 2 | 90203-9-121-R |
| 10 | 12 | 30 | 70 | 10 | 100 | 2 | 90203-9-124-R |
| 12 | 12 | 45 | 55 | 12 | 100 | 2 | 90203-9-114-R |
| 16 | 16 | 50 | 100 | 16 | 150 | 2 | 90203-9-118-R |
| 20 | 20 | 60 | 90 | 20 | 150 | 2 | 90203-9-136-R |
| 25 | 25 | 60 | 90 | 25 | 150 | 2 | 90203-9-138-R |

C6 PCD Ballnose Endmill

Composite & aluminium machining

Application

All composite & aluminium materials.

Machine

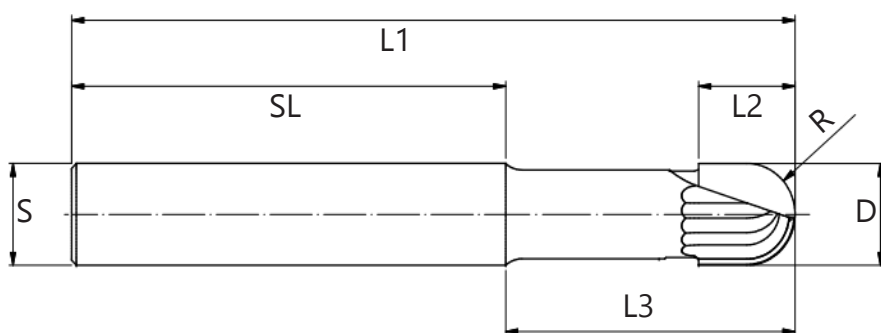
Mechanical.

Design

2 cutting flutes with straight shear and full radius. Ideally suited for 3D and 5 axis (+) machining. Solid carbide body to reduce vibration. Reduced neck diameter for deeper machining.

Radius

Full radius - ballnose end.



| D mm | R mm | L2 mm | L3 mm | SL mm | S mm | L1 mm | Z | Pt.No. |
|---------|---------|----------|----------|----------|---------|----------|---|---------------|
| 3 | 1.5 | 6 | 20 | 40 | 3 | 60 | 1 | 90203-9-127-R |
| 4 | 2 | 6 | 20 | 40 | 4 | 60 | 2 | 90203-9-128-R |
| 6 | 3 | 10 | 30 | 50 | 6 | 80 | 2 | 90203-9-113-R |
| 8 | 4 | 10 | 30 | 70 | 8 | 100 | 2 | 90203-9-119-R |
| 10 | 5 | 12 | 30 | 70 | 10 | 100 | 2 | 90203-9-123-R |
| 12 | 6 | 12 | 45 | 55 | 12 | 100 | 2 | 90203-9-126-R |
| 16 | 8 | 16 | 50 | 100 | 16 | 150 | 2 | 90203-9-117-R |
| 20 | 10 | 20 | 60 | 90 | 20 | 150 | 2 | 90203-9-137-R |
| 25 | 12.5 | 25 | 60 | 90 | 25 | 150 | 2 | 90203-9-139-R |



ALLIED

THE CUTTING EDGE

Allied Tooling Ltd
- Headquarters

Allied Tooling Ltd
- Wales

Allied Tooling Ltd
- West Midlands

Allied Tooling Ltd
- North West

Unit 2, 19 Willis Way
Poole
Dorset
BH15 3SS

Wales
[@alliedtooling.com](mailto:Sales@alliedtooling.com)

Westmidlands
[@alliedtooling.com](mailto:Sales@alliedtooling.com)

Northwest
[@alliedtooling.com](mailto:Sales@alliedtooling.com)

+44(0)1202 675767
Sales@alliedtooling.com
www.alliedtooling.com